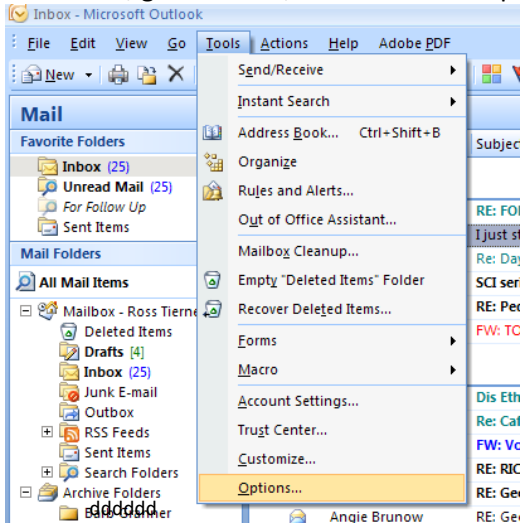
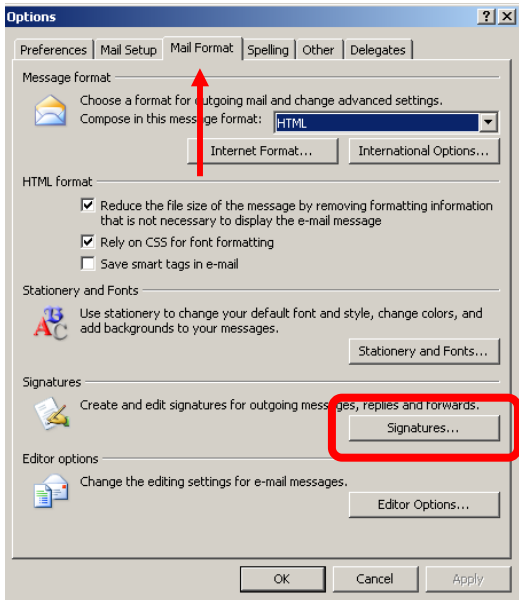


How to place your hyperlinked Storm the Stadium Footer in your e-mail signature

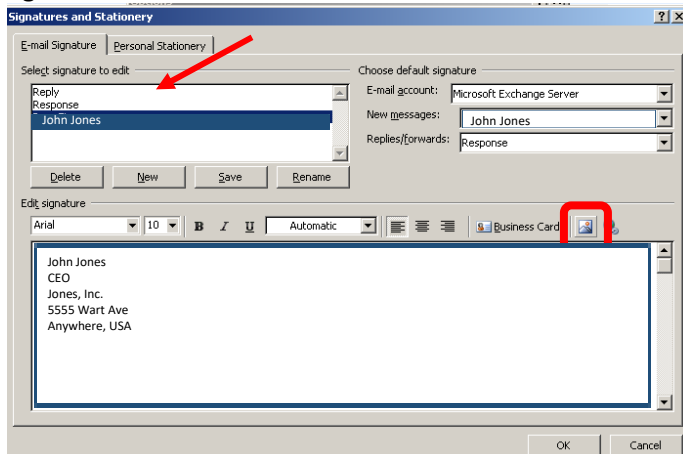
In Outlook, go to “Tools,” then click on “Options”:



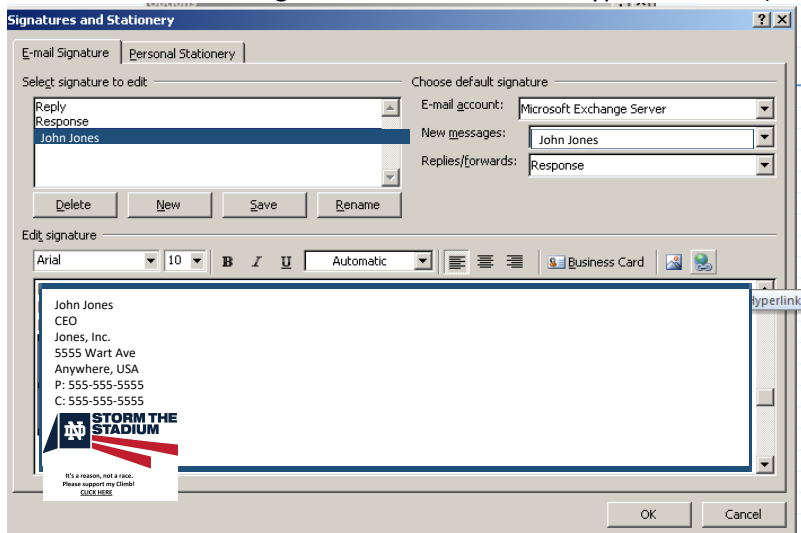
Under the “Mail Format” tab, click on the “Signatures...” button:



Select the Signature(s) you would like to add the STS Footer to, then click the “Picture” icon above the “Edit Signature” box. Browse for and insert the footer file “Email_Footer_01.png” saved on your desktop:



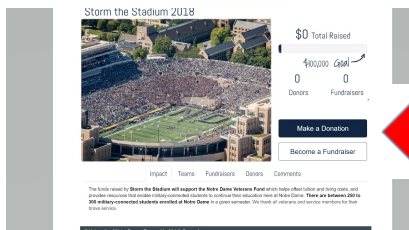
Click on the footer image and select the “Insert Hyperlink” icon (to the right of the “Picture” icon).



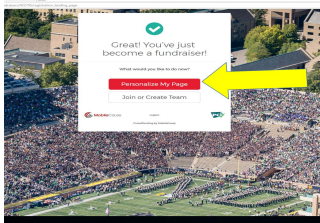
Copy and Paste the url for your personal STS fundraising page (see below for instructions on this part) into the “Address” field, click “OK” and you’re all set!

How to Copy your Personal STS Fundraising Page

Create an STS Team on the <https://app.mobilecause.com/vf/NDVets>. Then click on “Teams”:



At the very top of your participant center, click on “Your Personal Page”:



This will take you to your personal page. Click on and highlight the entire URL in the address bar.



Press “Ctrl + c” to copy the address.

Press “Ctrl + p” to paste the address.